

HA

HYDROLYZED®

Medical Indications:

Diets with these nutritional modifications have been recommended for cats with the following conditions:

GASTROINTESTINAL

- Elimination diet trial
- Food allergic gastroenteritis
- Food intolerance
- Inflammatory bowel disease
- Pancreatitis

DERMATOLOGIC

- Elimination diet trial
- Food allergic dermatitis

Medical Contraindications:

- None



Actual Size



Feeding and Administration:

Purina Pro Plan Veterinary Diets HA Hydrolyzed Feline Formula is formulated to meet the nutritional levels established by the AAFCO Cat Food Nutrient Profiles for growth of kittens and maintenance of adult cats.

The following feeding program is recommended as a guideline only, with discretionary clinical adjustments for proper weight maintenance.

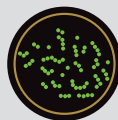
FEEDING GUIDE ¹		
BODY WEIGHT		DRY
lbs	kg	Approximate Number of 8-oz Cups/Day ³
5	2.3	1/2
8	3.6	3/4
12	5.4	1
16	7.2	1 3/8
20	9.1	1 3/4
25 ⁴	11.4	2 1/4
CALORIE CONTENT (CALCULATED) ²		
		3428 kcal/kg
		1555 kcal/lb
		291 kcal/8-oz cup
		85 g/cup



Ingredients:

Rice starch, hydrolyzed soy protein isolate, partially hydrogenated canola oil preserved with TBHQ, hydrolyzed chicken liver, calcium sulfate, powdered cellulose, hydrolyzed chicken, corn oil, tricalcium phosphate, fish oil, L-Lysine monohydrochloride, sodium bisulfate, potassium chloride, choline chloride, phosphoric acid, DL-Methionine, salt, guar gum, taurine, Vitamin E supplement, magnesium oxide, zinc sulfate, ferrous sulfate, niacin (Vitamin B-3), manganese sulfate, Vitamin A supplement, calcium pantothenate (Vitamin B-5), thiamine mononitrate (Vitamin B-1), copper sulfate, riboflavin supplement (Vitamin B-2), Vitamin B-12 supplement, pyridoxine hydrochloride (Vitamin B-6), folic acid (Vitamin B-9), Vitamin D-3 supplement, calcium iodate, biotin (Vitamin B-7), menadione sodium bisulfite complex (Vitamin K), sodium selenite. C256420

Gastrointestinal Health and Food Sensitivities:



Formula contains hydrolyzed protein sources to reduce the risk of allergic reaction



Single low-allergen carbohydrate source (rice starch) to help minimize the risk of an allergic reaction



Highly digestible formula to promote optimal nutrient absorption

- Contains omega-6 fatty acids, vitamin A and zinc to maintain and protect the skin barrier

General Health:

- St/Ox® Defense: This diet promotes a urinary environment unfavorable to the development of both struvite and calcium oxalate crystals
- High in antioxidant vitamins A and E to support a healthy immune system
- Great taste to help ensure adequate nutrient intake

AVERAGE NUTRIENT CONTENT

	DRY		
	PER 100 KCAL ME	AS FED	DRY MATTER
Protein	10.33 g	35.40%	38.96%
Fat	3.31 g	11.36%	12.50%
Carbohydrate	10.03 g	34.39%	37.85%
Crude Fiber	0.55 g	1.89%	2.08%
Total Dietary Fiber	1.60 g	5.49%	6.04%
Soluble Fiber	0.49 g	1.69%	1.86%
Insoluble Fiber	1.11 g	3.80%	4.18%
Calcium	0.37 g	1.27%	1.40%
Phosphorus	0.26 g	0.90%	0.99%
Potassium	0.19 g	0.64%	0.70%
Sodium	0.25 g	0.86%	0.95%
Chloride	0.19 g	0.65%	0.72%
Magnesium	0.02 g	0.08%	0.09%
Copper	0.52 mg	17.78 mg/kg	19.57 mg/kg
Zinc	8.58 mg	294.01 mg/kg	323.55 mg/kg
Taurine	0.07 g	0.24%	0.26%
Vitamin A	433 IU	14,838 IU/kg	16,329 IU/kg
Vitamin E	16.44 IU	563.41 IU/kg	620.02 IU/kg
Total Omega-6 Fatty Acids	0.80 g	2.74%	3.02%
Total Omega-3 Fatty Acids	0.22 g	0.76%	0.84%
EPA+DHA	0.08 g	0.28%	0.30%

DIGESTION TEST RESULTS†

DIGESTIBILITY:	DRY
Total, %	88.4
Protein, %	93.5
Fat, %	90.1
Carbohydrate, %	95.8
Calorie, %	91.4
PERCENTAGE OF METABOLIZABLE ENERGY FROM:	
Protein, %	36.4
Fat, %	28.3
Carbohydrate, %	35.3

† Based on digestion testing conducted at the Purina PetCare Technology Centers

1 Adjustments must be made for environmental conditions, activity level, and body condition. Provide fresh water in a clean container daily.

2 Kilocalories of metabolizable energy (ME)

3 This daily amount should be divided into several small meals throughout the day.

4 For each additional pound of body weight, feed an additional 24 kilocalories.

Purina trademarks are owned by Société des Produits Nestlé S.A. VET-0924E-PRODUCTGUIDE