

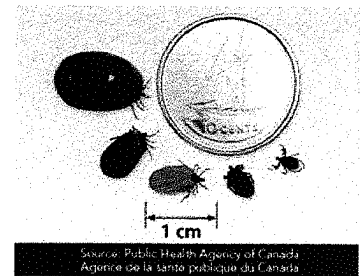
# Why is 4Dx Testing so Important?

The 4Dx blood screening test checks your dog for heartworm disease and three common tick-borne diseases: Lyme disease, Anaplasmosis and Ehrlichiosis.

**Annual screening is done to ensure the heartworm and tick preventative program you have chosen for your dog is effective.**

Tick borne diseases are becoming increasingly common due to climate change and the migration of the black-legged/deer tick and Lonestar tick. Southern Manitoba is endemic for Lyme disease (transmitted via the deer tick). We are diagnosing positive cases in dogs that have reportedly never left their own backyard. Although not as common, we are also diagnosing positive cases of Anaplasmosis and Ehrlichiosis transmitted by the deer tick and Lonestar tick.

Deer ticks are extremely small with the unengorged adult tick being only the size of a sesame seed. This small size makes deer ticks easy to miss when performing a thorough tick check of your dog. Dogs that are being regularly inspected for ticks, are testing positive for disease, telling us that despite owners' efforts to remove ticks in a timely manner, ticks are being missed.



Tick-borne diseases, in the early stage, do not necessarily make your dog sick. It can be months, or even years before clinical signs of arthritis, lethargy and fever develop. Annual screening for tick-borne diseases identifies infected dogs and allows for early treatment before systemic and irreversible damage occurs.

**Whether your pet is vaccinated for Lyme, on a monthly tick preventative and/or being routinely inspected for ticks, let us ensure your pet had not contracted a tick-borne disease.**

Heartworm is a serious, potentially fatal disease in pets that is spread via an infected mosquito. It is found in parts of Canada including Winnipeg and surrounding areas.

Heartworm disease can cause lasting damage to the heart, lungs and arteries, life long, even after the parasites are gone. In the early stages of the disease, many dogs show few symptoms or no symptoms at all. Signs of heartworm disease may include a mild persistent cough, reluctance to exercise, fatigue after moderate activity, decreased appetite, and weight loss.

Heartworm resistance to anti-parasitic medications is becoming a problem in parts of the United States. Despite this emerging problem, poor compliance remains the biggest risk for pets acquiring heartworm disease.

**Whether your pet receives the heartworm preventative on time each month, or maybe late or missed doses, let us ensure your pet has not contracted heartworm.**

